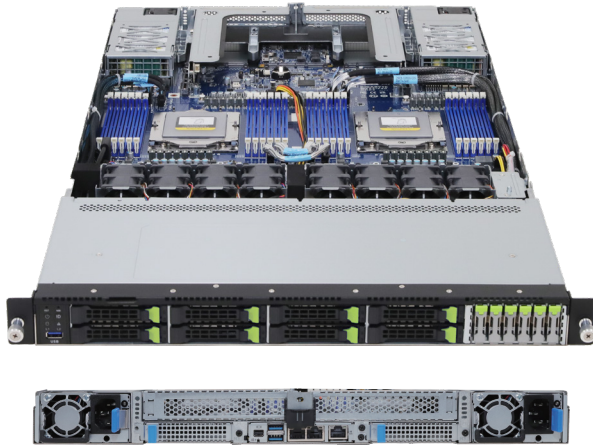
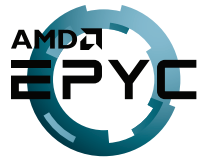


R183-Z95-AAD1

1U DP 14-Bay NVMe/SATA/SAS Rack Server



Features

- AMD EPYC™ 9004 series processor family
- Dual processors, 5nm technology
- 2-Channel RDIMM DDR5, 24 x DIMMs
- Dual ROM Architecture supported
- 2 x 1Gb/s LAN ports
- 1 x dedicated management port
- 8 x 2.5" Gen5 NVMe/SATA hot-swappable bays
- 6 x EDSFF E1.S hot-swappable bays
- 3 x Ultra-Fast M.2 with PCIe Gen3 interface
- 2 x FHHL PCIe Gen5 x16 expansion slots
- 2 x OCP 3.0 Gen5 x16 mezzanine slots
- Dual 1600W 80 PLUS Platinum redundant power supply

Specification

Dimensions	1U (W438 x H43.5 x D815 mm)	Backplane I/O	PCIe Gen5 x4 or SATA 6Gb/s or SAS4 24Gb/s or EDSFF 32Gb/s
Motherboard	MZ93-FS1	TPM	1 x TPM header with SPI interface (Optional TPM2.0 kit: CTM010)
CPU	AMD EPYC™ 9004 series processor Dual processors, 5nm technology, cTDP up to 300W Up to 96-core, 192 threads per processor 2 x LGA 6096 Socket SP5	Power Supply	Dual 1600W 80 PLUS Platinum redundant power supply AC Input: 100-240V
Chipset	System on Chip	System Management	Aspeed® AST2600 management controller GIGABYTE Management Console (AMI MegaRAC SP-X)
Memory	24 x DIMM slots 12-Channel DDR5 memory, up to 4800 MHz RDIMM modules up to 128GB supported 3DS RDIMM modules up to 256GB supported	OS Compatibility	Windows Server 2019 / 2022 RHEL 8.6 / 8.7 / 9 / 9.1 (x64) SLES 15 SP4 (x64) Ubuntu 20.04.5 LTS / 22.04 LTS / 22.04.1 LTS (x64) VMware ESXi 7.0 Update 3i / 8.0 Citrix Hypervisor 8.2.1
LAN	2 x 1GbE LAN ports (1 x Intel I350-AM2) Supported NCSI function 1 x 10/100/1000 management LAN	System Fans	8 x 40x40x56mm (32,000rpm)
Video	Integrated in Aspeed AST2600 2D Video Graphic Adapter with PCIe bus interface 1920x1200@60Hz 32bpp, DDR4 SDRAM	Operating Properties	Operating temperature: 10°C to 35°C Operating humidity: 8-80% (non-condensing) Non-operating temperature: -40°C to 60°C Non-operating humidity: 20%-95% (non-condensing)
Storage	8 x 2.5" Gen5 NVMe/SATA hot-swappable bays 6 x EDSFF E1.S hot-swappable bays SAS card is required for SAS4 devices support	Packaging Content	1 x R183-Z95 2 x CPU heatsinks 1 x Rail kit
Expansion Slots	2 x PCIe Gen5 x16 FHHL slots 2 x PCIe Gen5 x16 OCP 3.0 slots - Supporte NCSI function 2 x M.2 slots (M-key, PCIe Gen3 x4, NGFF-2280/22110) 1 x M.2 slot (M-key, PCIe Gen3 x2, NGFF-2280/22110)	Reference Numbers	Barebone package: 6NR183Z95DR000AAD1** - Motherboard: 9MZ93FS1UR-000 - Rail kit: 25HB2-3A0206-K0R - CPU heatsink: 25ST1-553202-A0R - Back plane board: TBD-00 - Front panel board_CFP1013: 9CFP1030NR-00 - Mini-DP to D-Sub cable: 25CRN-200801-K1R - Power supply: 25EP0-216008-L0S
Front I/O	1 x USB 3.2 Gen1		
Rear I/O	2 x USB 3.2 Gen1, 1 x Mini-DP, 2 x RJ45, 1 x MLAN		



Learn more about GIGABYTE server solutions, visit www.gigabyte.com/Enterprise

* All specifications are subject to change without notice. Please visit our website for the latest information.

* AMD, and the AMD Arrow logo, AMD EPYC and combinations thereof are trademarks of Advanced Micro Devices, Inc.

* All other brands, logos and names are property of their respective owners.

© 2023 Giga Computing Technology Co., Ltd. All rights reserved.