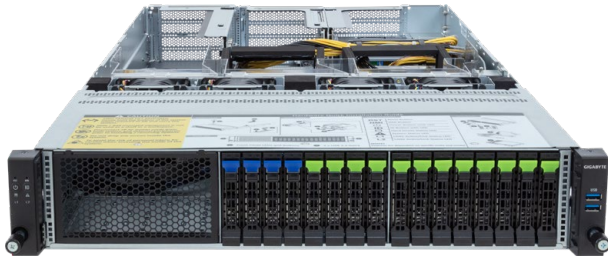


R283-SF1-AAL1

Rack Server - 2U DP 4-GPU 16-Bay NVMe/SATA



Features

- Supports up to 4 x dual-slot Gen5 GPU cards
- 4th Gen Intel® Xeon® Scalable Processors
- Intel® Xeon® CPU Max Series
- Dual processor, LGA 4677
- 8-Channel RDIMM DDR5 per processor, 32 x DIMMs
- Dual ROM Architecture
- 1 x Dedicated management port
- 12 x 2.5" Gen5 NVMe/SATA/SAS4 hot-swappable bays
- 4 x 2.5" SATA/SAS4 hot-swappable bays
- 4 x FHFL PCIe Gen5 x16 slots for GPUs
- 1 x FHHL PCIe Gen5 x16 slot
- 1 x OCP 3.0 Gen5 x16 slot
- Dual 2700W 80 PLUS Titanium redundant power supply

Specification

Dimensions	2U (W438 x H87.5 x D815 mm)	Backplane I/O	PCIe Gen5 x4 or SATA 6Gb/s or SAS4 24Gb/s
Motherboard	MSF3-GP0	TPM	1 x TPM header with SPI interface (Optional TPM2.0 kit: CTM010)
CPU	4th Generation Intel® Xeon® Scalable Processors Intel® Xeon® CPU Max Series Dual processor, CPU TDP up to 350W 2 x LGA4677 Socket E	Power Supply	Dual 2700W 80 PLUS Titanium redundant power supply AC Input: 100-240V
Chipset	Intel® C741 Chipset	System Management	Aspeed® AST2600 management controller GIGABYTE Management Console (AMI MegaRAC SP-X)
Memory	32 x DIMM slots, 8-Channel DDR5, Up to 4800 MHz (1DPC), 4400 MHz (2DPC) RDIMM modules up to 96GB supported 3DS RDIMM modules up to 256GB supported	OS Compatibility	Windows Server 2019 / 2022 RHEL 8.6 / 8.7 / 9.0 / 9.1 / 9.2 (x64) SLES 15 SP4 Ubuntu 22.04 / 22.04.1 / 22.04.2 / 22.04.3 LTS(x64) VMware ESXi 7.0 Update 3i / 8.0 / 8.0 Update 1 Citrix Hypervisor 8.2 LTSR CU1
LAN	1 x 10/100/1000 management LAN	System Fans	1 x 40x40x28mm (34,000rpm) 4 x 80x80x56mm (15,500rpm)
Video	Integrated in Aspeed AST2600 2D Video Graphic Adapter with PCIe bus interface 1920x1200@60Hz 32bpp, DDR4 SDRAM	Operating Properties	Operating temperature: 10°C to 30°C Operating humidity: 8-80% (non-condensing) Non-operating temperature: -40°C to 60°C Non-operating humidity: 20%-95% (non-condensing)
Storage	12 x 2.5" Gen5 NVMe/SATA/SAS4 hot-swappable bays 4 x 2.5" SATA/SAS4 hot-swappable bays SAS card is required for SAS devices support	Packaging Content	1 x R283-SF1, 2 x CPU heatsinks, 1 x Mini-DP to D-Sub cable, 6 x Carrier clips, 1 x 2-Section Rail kit
Expansion Slots	4 x FHFL PCIe Gen5 x16 slots for GPUs 1 x FHHL PCIe Gen5 x16 slot 1 x OCP 3.0 Gen5 x16 slot	Reference Numbers	Barebone package: 6NR283SF1DR000AAL1* - Motherboard: 9MSF3GP0UR-000 - 2-Section Rail kit (CMA not supported): 25HB2-3A0206-K0R - CPU heatsink: 25ST1-4Z3200-S7R - Power supply: 25EPO-227000-D0S
Front I/O	2 x USB 3.2 Gen1		
Rear I/O	2 x USB 3.2 Gen1, 1 x Mini-DP, 1 x MLAN		



Learn more about GIGABYTE server, visit www.gigabyte.com/Enterprise

* All specifications are subject to change without notice. Please visit our website for the latest information.
* Intel, the Intel logo, Xeon, and other Intel marks are trademarks of Intel Corporation or its subsidiaries.
* All other brands, logos and names are property of their respective owners.

© 2023 Giga Computing Technology Co., Ltd. All rights reserved.

Engineered by

